

For immediate release

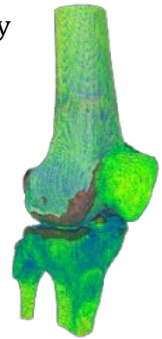
Orthopedic Driven Imaging secures new strategic funding from the Innovation Center at Orlando Health Jewett Orthopedic Institute to advance the patient-specific surgery ecosystem

Gainesville, FL – 8/18/2025 – Orthopedic Driven Imaging (ODI), a medical technology company building the next generation of orthopedic imaging solutions, announced today a strategic investment from the Innovation Center at Orlando Health Jewett Orthopedic Institute. The investment supports ODI's mission to simplify surgery and improve outcomes through a unique ecosystem of imaging hardware and AI-driven software that enables personalized, dynamic surgical planning and execution.

This funding will accelerate ODI's development of a fully integrated imaging platform for orthopedic surgery. By combining novel low-dose fluoroscopic hardware with an AI-enabled imaging solution, ODI addresses critical limitations of traditional 2D x-ray and high-cost CT systems. The company's ecosystem includes tools for 3D surgical planning, intraoperative guidance, and postoperative evaluation, all tailored to the unique anatomy and motion of each patient.

ODI's innovations are built on decades of scientific research, including dynamic kinematic analysis pioneered by Scott Banks, PhD, co-founder of ODI and Knee Society member. "With ODI, we are re-engineering advanced imaging and analysis, giving surgeons practical tools they can use with their patients across the entire continuum of care. The Innovation Center at Orlando Health Jewett Orthopedic Institute's support gives us confidence we are on the right path to have a major positive impact on patient care," said Dr. Banks. The company's platform will close the information loop for surgeons, providing quantitative, real-time, dynamic 3D insights (4D) before, during, and after orthopedic procedures.

"The Innovation Center at Orlando Health Jewett Orthopedic Institute invests in companies that are changing the future of care," said Erick Hawkins, chief administrative officer at

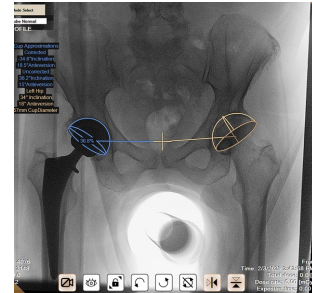




Orthopedic Driven Imaging
Phone: 901-603-1309
Email: info@orthodriven.com
www.orthodriven.com

Orlando Health. “ODI’s platform stands to enhance surgical accuracy while reducing costs and radiation exposure. We are excited to support the team’s work in transforming orthopedic imaging and driving better outcomes for patients.”

“Orthopedic surgeons operate in 3D but have long been forced to rely on outdated 2D technology,” said Don Running, CEO of ODI. “Our partnership with the Innovation Center at Orlando Health Jewett Orthopedic Institute accelerates our vision of delivering smarter, safer, and more personalized orthopedic care in 3D and beyond as we establish a 4D paradigm (kinematic-driven alignment).”



“With traditional C-Arms, we just aren’t used to visualizing pelvic axial rotation since we’ve only had small images available in the operating room. The view that the ODI unit provides is a great example of why a full AP pelvis has the potential to help make our surgery more accurate,” said J. Dean Cole, MD, orthopedic surgeon at the Orlando Health Jewett Orthopedic Institute.

ODI’s initial product portfolio of fluoroscopic systems includes a surgical ODI unit (S-ODI), a clinical unit for extremities (C-ODI x), a clinical unit for single joint imaging and arthrograms (C-ODI Lite), and a suite of associated AI-powered surgical apps. Initial prototype feedback underscores the value of ODI’s technology in procedures such as total hip replacement, where enhanced imaging of the pelvis improves rotational accuracy and implant positioning.



The Innovation Center at Orlando Health Jewett Orthopedic Institute’s investment builds on momentum for ODI as it prepares for commercial scale-up and clinical deployments across leading orthopedic centers.

About Orthopedic Driven Imaging (ODI)

Founded in 2023, ODI is pioneering a new era in orthopedic surgery by delivering a complete ecosystem for patient-specific visualization and planning. By unifying advanced fluoroscopic hardware with real-time software and AI, ODI empowers surgeons to make data-driven decisions, reduce operating time, and improve outcomes. Learn more at www.orthodriven.com.

About the Orlando Health Jewett Orthopedic Institute Innovation Center

The Orlando Health Jewett Orthopedic Institute Innovation Center is the driving force behind breakthrough orthopedic innovation, fueling startups and early-stage companies that share its mission to transform health and deliver world-class care. With deep clinical



Orthopedic Driven Imaging
Phone: 901-603-1309
Email: info@orthodrive.com
www.orthodrive.com

expertise, hands-on advisory support, and access to strategic investment capital, the center unites the talents of Orlando Health Jewett Orthopedic Institute physicians with visionary entrepreneurs to fast-track high-potential technologies from concept to clinical impact.

Media Contacts:

Orthopedic Driven Imaging

Scott McCaig, PhD
Mac@orthodrive.com
901-603-1309

Orlando Health

Elizabeth Katona, APR
Elizabeth.katona@orlandohealth.com
386-283-1314